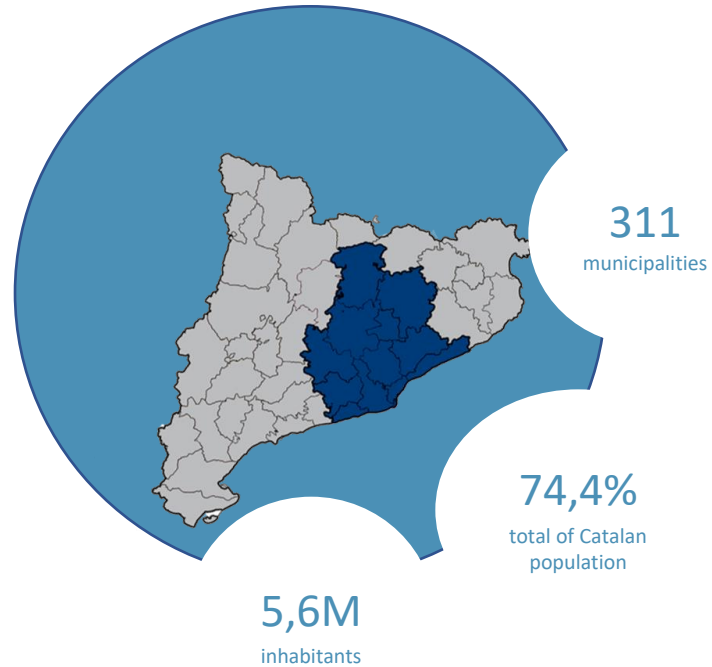


Local Time Management Plans

A Guide from the
Barcelona Provincial
Council



Barcelona province



Inhabitants	Municipalities	%
< 5.000	181	58%
5.001 - 20.000	83	27%
20.001 - 75.000	35	11%
> 75.000	12	4%
Total	311	100%

Right to time

- Well-being and social cohesion.
- Care coresponsibility.
- Tackle time poverty.
- Health and social inclusion.



Framework

- The Barcelona Declaration for Time Policies
- The Interinstitutional Agreement
- The Barcelona Provincial Council's Mandate Action Plan



Care and time policies of the Barcelona Provincial Council

- The residential Respir service
- Emotional Support and Mutual Aid Groups,
- The Caring Municipalities program
- The Nexes program for tackling loneliness in older adults
- Local time management plans

Context

Historical opportunity

- 1** — **Socially: time discomfort**
- 2** — **Political-economic context:
Time Use Law and Reduction of the Working Day**
- 3** — **Research: New data and evidence on the uses of time**

Definition

- It is a local policy that allows for the inclusion of a time use perspective in all municipal actions and implements a commitment to work with financial and human resources.
- They are the instrument for achieving more balanced time use and guaranteeing citizens' right to time.

Local Time Management Plan

Benefits of Time Policies

BENEFITS OF TIME POLICIES

Health and
well-being



Equality



Productivity



Sustainability



Key Actors Involved (I)



Municipal government



Time Policy Leadership Group



**Time Chief Officer
+
Sectoral working groups**

Key Actors Involved (II)



Municipal government

Crucial role

- Formally approves the plan.
- Ensures political support and resources for implementing it.
- Gives the process legitimacy and continuity.



Time Policy Leadership Group

Provide strategic guidance and political support

- Define the strategic axes and the priority actions of the plan.
- Make sure that the Plan is aligned with the Municipal Action Plan
- Monitor the global process and help unblock any issues that arise along the way.

Key Actors Involved (III)



Time Chief Officer

Leads the development of the Plan

- Coordinate between teams, specially with the Leadership Group.
- Organize the working sessions of the sectoral groups
- Draft the plan
- Lead the day-to-day development and monitoring of the process



Sectoral Working Groups

They include city staff, experts, or even citizenship

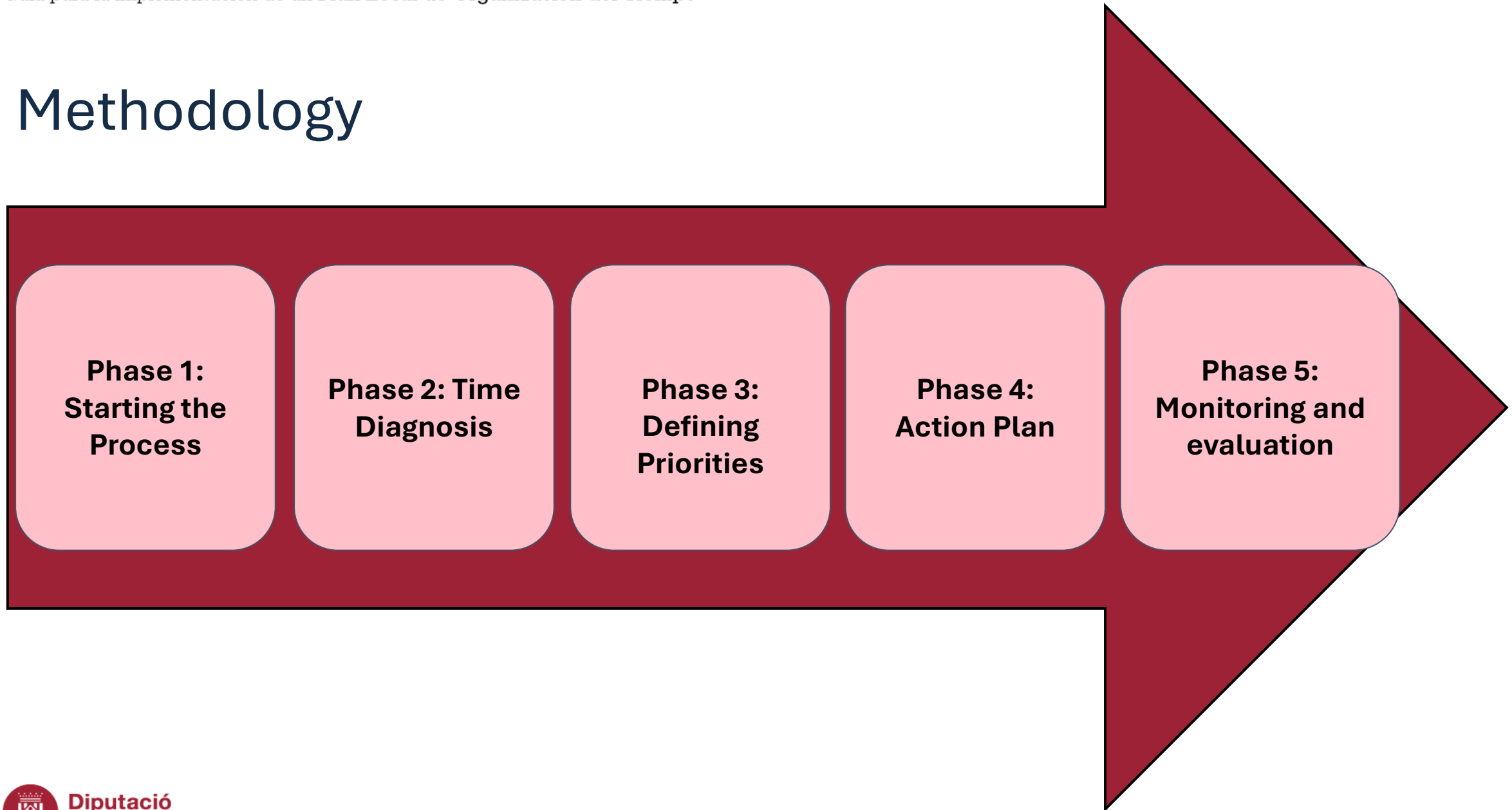
- Provide specific insight on the areas adressed like mobility, care, education, or public services.
- Define the **concrete actions** of the plan.

Thematic Areas of the Plan

- 1. Paid work**
- 2. Domestic and care work**
- 3. Commuting**
- 4. Education**
- 5. Rest and night-time services**
- 6. Leisure and public facilities**
- 7. Administrative procedures and civic participation**



Methodology



Pilot projects

In two municipalities:

- Sant Adrià del Besòs: 38.490 inhab.
- El Prat de Llobregat: 66.184 inhab.



New rights for the 21st Century: care and time

CSW69 / Beijing + 30 Side Event

Guía para la implementación de un Plan local de organización del tiempo



**Thanks for your
attention!**

